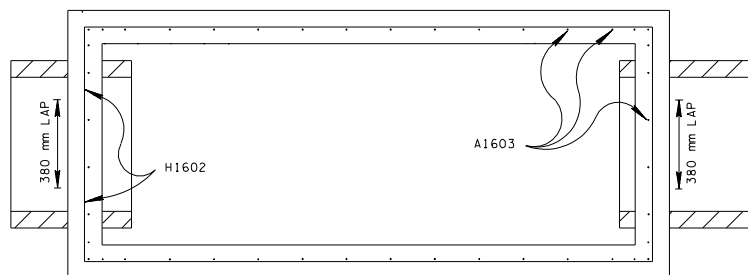
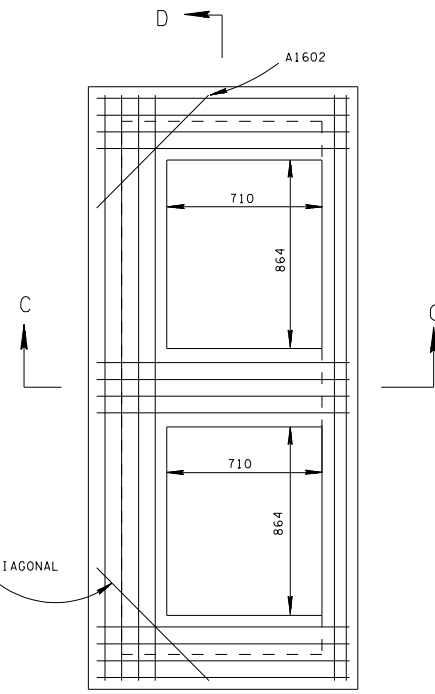


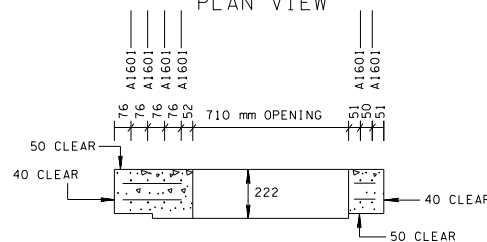
PLAN VIEW



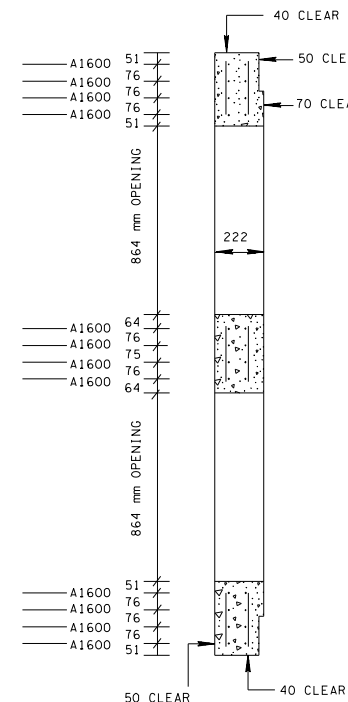
SECTION E-E



PLAN VIEW



SECTION C-C



SECTION D-D

- REV. 7-29-02: CHANGED ASTM SPECIFICATION IN GENERAL NOTE ①
- REV. 10-26-97: CHANGED MINIMUM DEPTH TABLE AND MODIFIED STEEL IN BASE SECTION.
- REV. 1-19-99: MODIFIED CATCH BASIN MINIMUM DEPTH TABLE.
- REV. 5-27-01: CHANGED PAY ITEMS IN GENERAL NOTE ①
- REV. 11-1-95: CHANGED TO METRIC.
- REV. 10-26-96: MADE MINOR DIMENSIONING CORRECTIONS.
- REV. 12-18-96: REMOVED 13 mm PREMOLED FIBER EXPANSION JOINT FROM SECTION "B-B". REMOVED OLD GENERAL NOTE ⑥. CHANGED LABEL OF LAST THREE GENERAL NOTES.

CATCH BASIN MINIMUM DEPTH TABLE			
INSIDE DIAMETER (X) OF PIPE (mm)	MINIMUM DEPTH - (m)		
	CONCRETE PIPE	CORRUGATED METAL PIPE	POLYETHYLENE PIPE
450	1.35	1.28	1.32
600	1.50	1.44	1.49
750	1.68	1.59	1.66
900	1.84	1.75	1.82

- ① DEPTH MEASUREMENT MADE FROM TOP OF GRATE TO OUTLET FLOW ELEVATION BASED ON INLET AND OUTLET PIPES BEING THE SAME DIAMETER, IF OUTLET PIPE IS GREATER ADJUSTMENT IN DEPTHS MUST BE MADE TO ACCOMMODATE THIS SITUATION.
- ② TO DETERMINE FLOOR OF CATCH BASIN ELEVATION, WHEN INLET AND OUTLET PIPES ARE THE SAME SIZE, ADD PIPE WALL THICKNESS PLUS 40 mm TO THE ABOVE MINIMUM DEPTHS.

CUT-OUT HOLES FOR INLET & OUTLET PIPES			
INSIDE DIAMETER (X) OF PIPE (mm)	DIAMETER OF CUT-OUT HOLES F & G - (MILLIMETERS)		
	CONCRETE PIPE	CORRUGATED METAL PIPE	POLYETHYLENE PIPE
450	660	535	610
600	815	685	785
750	1015	840	990
900	1195	1015	1145

- ① CUT-OUT HOLES FOR PRECAST STRUCTURES TO BE CORED OR FORMED IN ORDER TO OBTAIN A SMOOTH EDGED HOLE. SCORED OR ETCHED HOLES WITH REINFORCING STEEL LEFT UNCUT WILL NOT BE PERMITTED.
- ② TO BE USED IN FRONT AND BACK WALLS ONLY.

REINFORCING STEEL LEGEND			
1115	A1600	660	H1601
2640	A1601	660	H1600
760	A1602	1065	H1602
VARIABLE	A1603	2590	H1602

GENERAL NOTES

- (A) DRAWING TO BE USED FOR ALL PRECAST NO. 29 CONCRETE CATCH BASINS THAT ARE BETWEEN MINIMUM DEPTH AND 3.0 METER. SEE STANDARD DRAWING DM-CB-29S FOR DETAILS OF CAST-IN-PLACE NO. 29 CONCRETE CATCH BASINS AND PRECAST NO. 29 CONCRETE CATCH BASINS THAT ARE GREATER THAN 3.0 METER IN DEPTH.
- (B) THE CONTRACTOR MAY WITH PERMISSION FROM THE ENGINEER SUBSTITUTE PRECAST CATCH BASINS FOR CAST-IN-PLACE CATCH BASINS PROVIDED THAT ALL PRECAST ELEMENTS MEET ASTM M913 (CURRENT EDITION) UNLESS SUPERSEDED BY THIS DRAWING.
CONCRETE: $f'_c = \text{MPa } 28 \text{ DAYS}$
REINFORCING STEEL: ASTM A615M, $F_y = 415 \text{ MPa}$
ALL REINFORCING IS TO BE INSTALLED AS DETAILED ON THIS DRAWING.
- (C) PRECAST CATCH BASIN UNITS WHICH ARE DAMAGED DURING SHIPMENT OR INSTALLATION WILL BE REJECTED. IT SHALL BE THE RESPONSIBILITY OF THE CONTRACTOR TO REPLACE DAMAGED CATCH BASIN UNITS AT HIS OWN EXPENSE.
- (D) ADDITIONAL REINFORCING STEEL NECESSARY ABOVE THE CORED OR FORMED CUT-OUT HOLES TO MAINTAIN THE INTEGRITY OF THE STRUCTURE DURING HANDLING AND PLACEMENT SHALL BE THE RESPONSIBILITY OF THE FABRICATOR.
- (E) APPROPRIATE SIZING AND LOCATION OF LIFTING DEVICES SHALL BE THE RESPONSIBILITY OF THE FABRICATOR TO ASSURE BALANCED HANDLING DURING INSTALLATION OF THE CATCH BASIN.
- (F) THE CONTRACTOR IS TO PATCH ALL LIFTING DEVICE HOLES AND PLACE A MINIMUM OF 25 mm OF COVER OVER THE HARDWARE OF THESE DEVICES ON BOTH TOP AND BOTTOM SURFACES.
- (G) INVERT ELEVATIONS ARE TO BE ADJUSTED AS DIRECTED BY THE ENGINEER IN ORDER TO ACCOMMODATE INLET AND OUTLET PIPES.
- (H) SEE STANDARD DRAWING DM-CBB-12C FOR DETAILS REGARDING CAST IRON GRATES, FRAMES AND CURB INLETS.
- (I) PAYMENT FOR CATCH BASIN WILL BE MADE UNDER ITEM NUMBERS 611M29.02 CATCH BASINS, TYPE 29, > 1m-2m DEPTH AND 611M29.03, CATCH BASINS, TYPE 29, > 2m-3m DEPTH PER EACH.



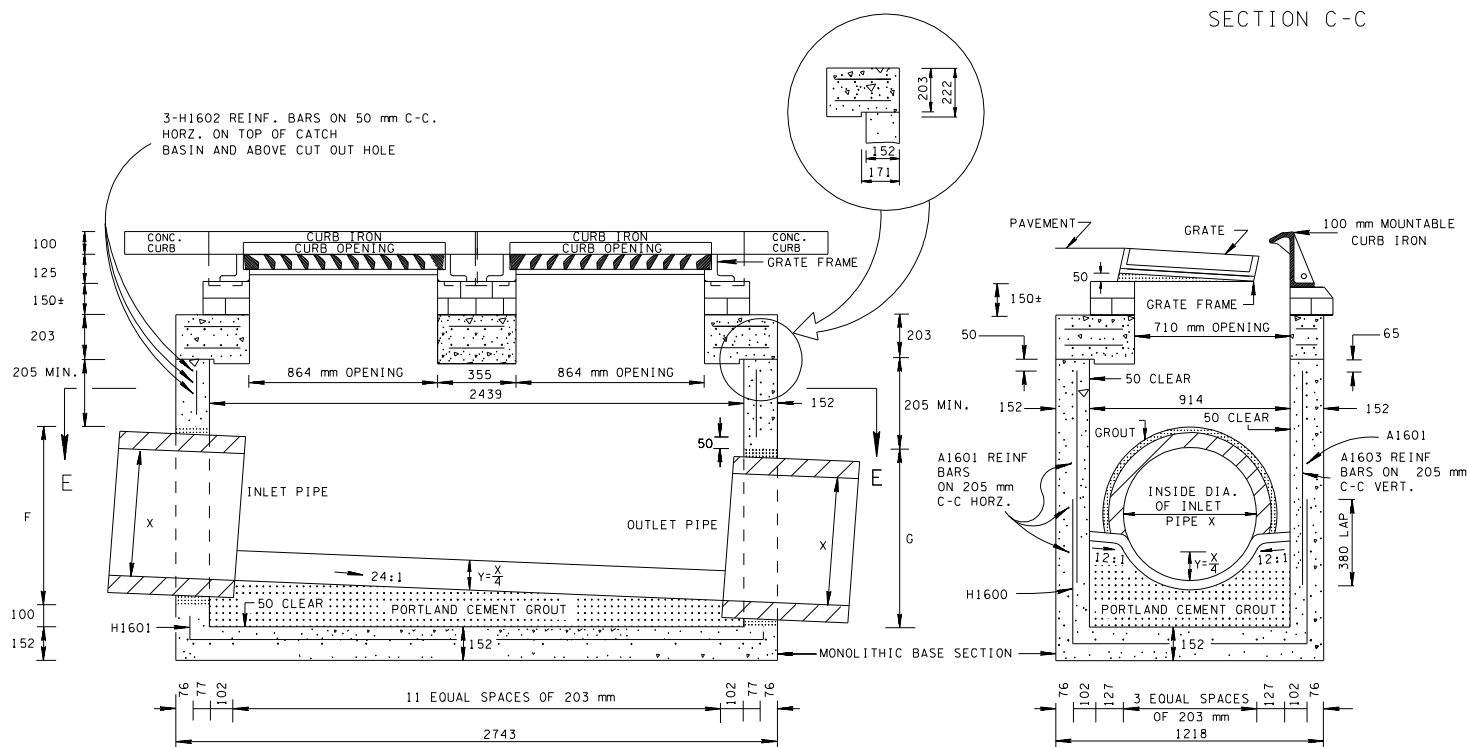
ALL UNITS ARE IN MILLIMETERS UNLESS NOTED OTHERWISE.

MINOR REVISION -- FHWA APPROVAL NOT REQUIRED.

STATE OF TENNESSEE
DEPARTMENT OF TRANSPORTATION

STANDARD PRECAST
RECTANGULAR
CONCRETE NO. 29
CATCH BASIN
(FOR USE WITH 100 mm
MOUNTABLE CURB)

11-1-95 DM-CB-29P



SECTION A-A

SECTION B-B